

Advantech AE Technical Sharing Documentation

Date	2018/6/7	SR#	1-3467883027
Category	■FAQ □ SOP	Related OS	WIN CE
Abstract	How to install driver for PCM-24DXRX-BE under WINCE.		
Keyword	COM port, idoor, update, WIN CE		
Related Product	UNO-1372G, PCM-24D2R2-BE		

■ **Problem Description:**

If your image version is before V4.02.106, it will not support PCM-24DXRX-BE idoor. The only way can support the door is update the NK.NBG which you can copy from V4.02.106 or newer.

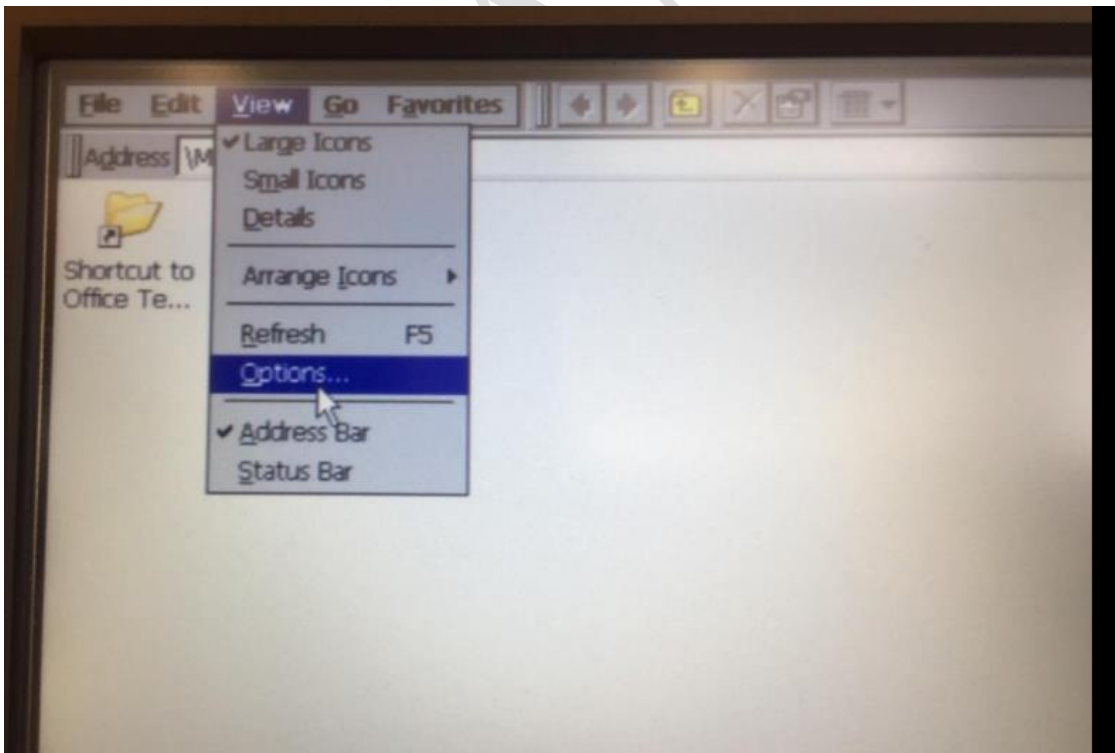
This FAQ will teach you how to instill the driver though the update the OS.

And the second part is teaching you how to test the com port function using loopback tool.

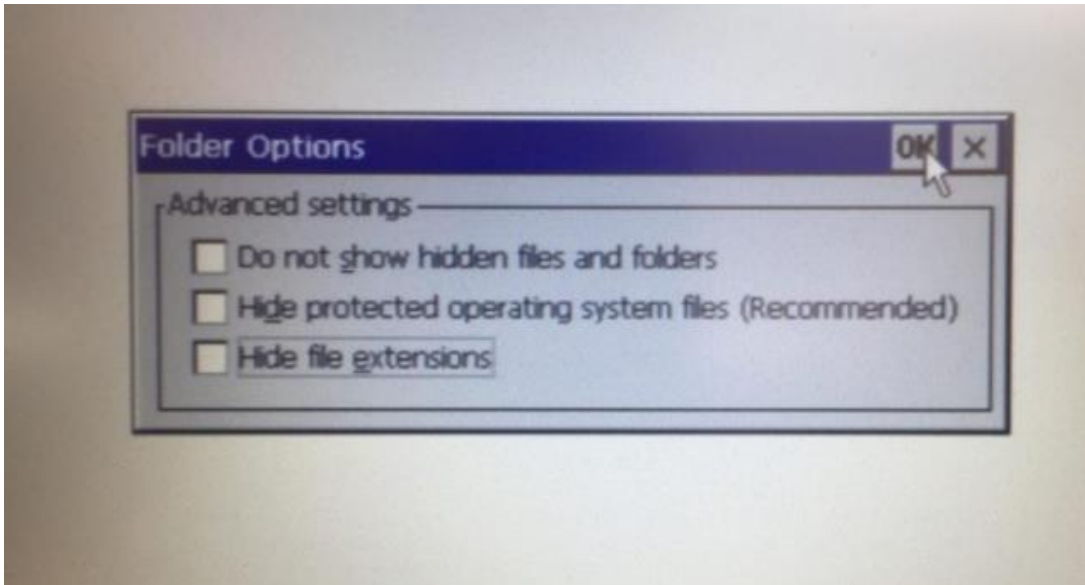
■ **Solution - Step by Step:**

1. How to install the driver by update image?

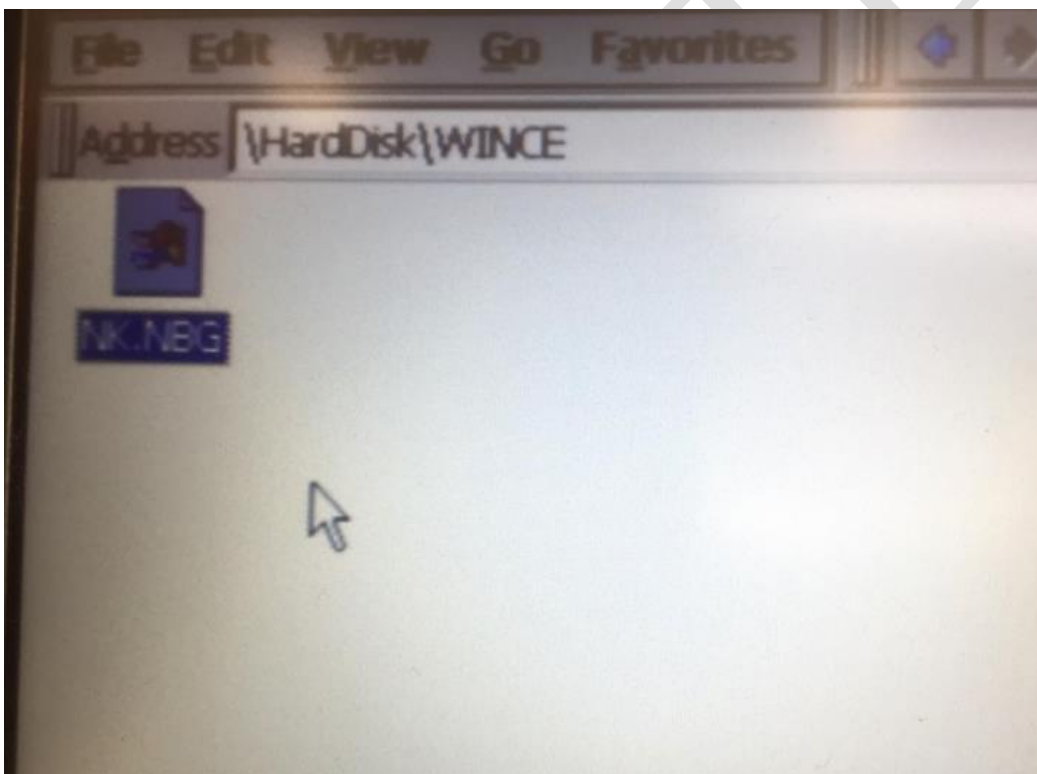
1. Select the Options



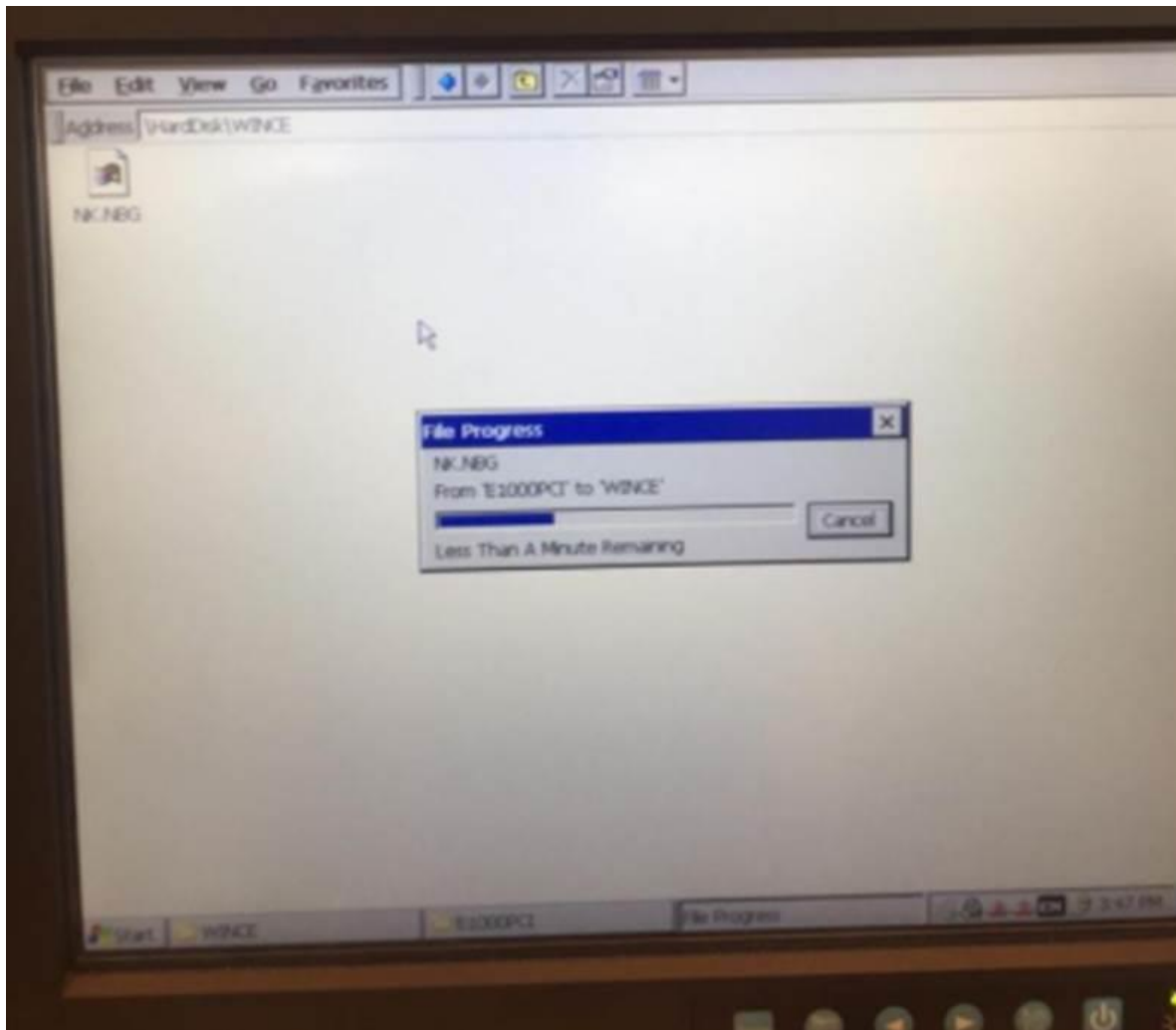
2. Unclick all the selection



3. Delete the NK.NBG file



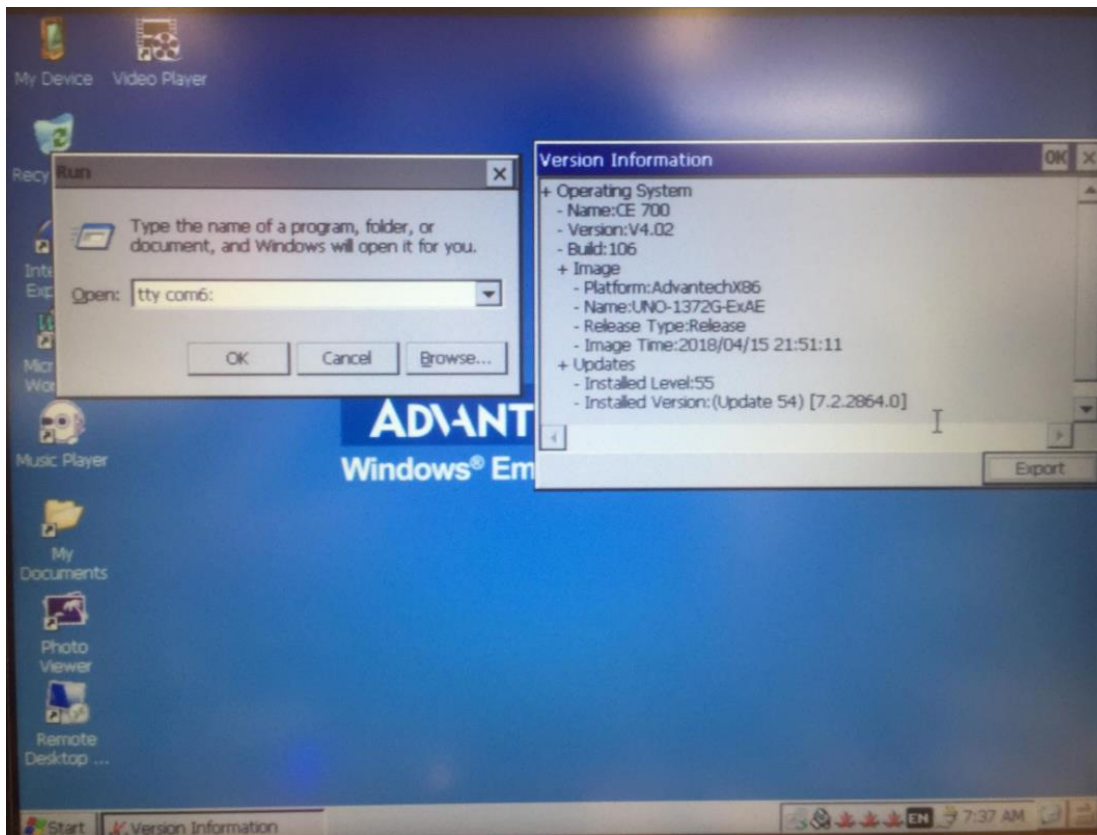
4. Copy the new NK.NBG in to \HardDisk\WINCE (make sure the NK.NBG is copy form V4.02.106 or newer.)



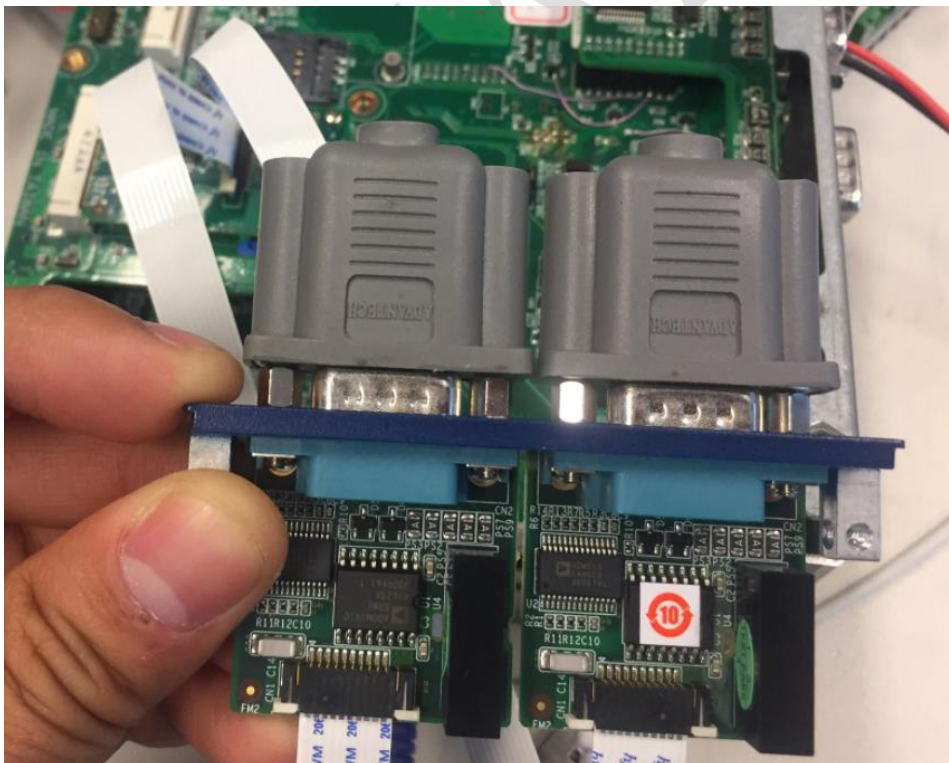
5. Reboot.

2. How to test the function of PCM-24DXRX-BE under WEC7?

1. Start->Run->type “tty COM6:”->Enter



2. Plug in the loopback tools on the PCM-24DXRX-BE.



3. Type any text from keyboard; you will see the test on the terminal.
It means works.

