

Advantech AE Technical Sharing Documentation

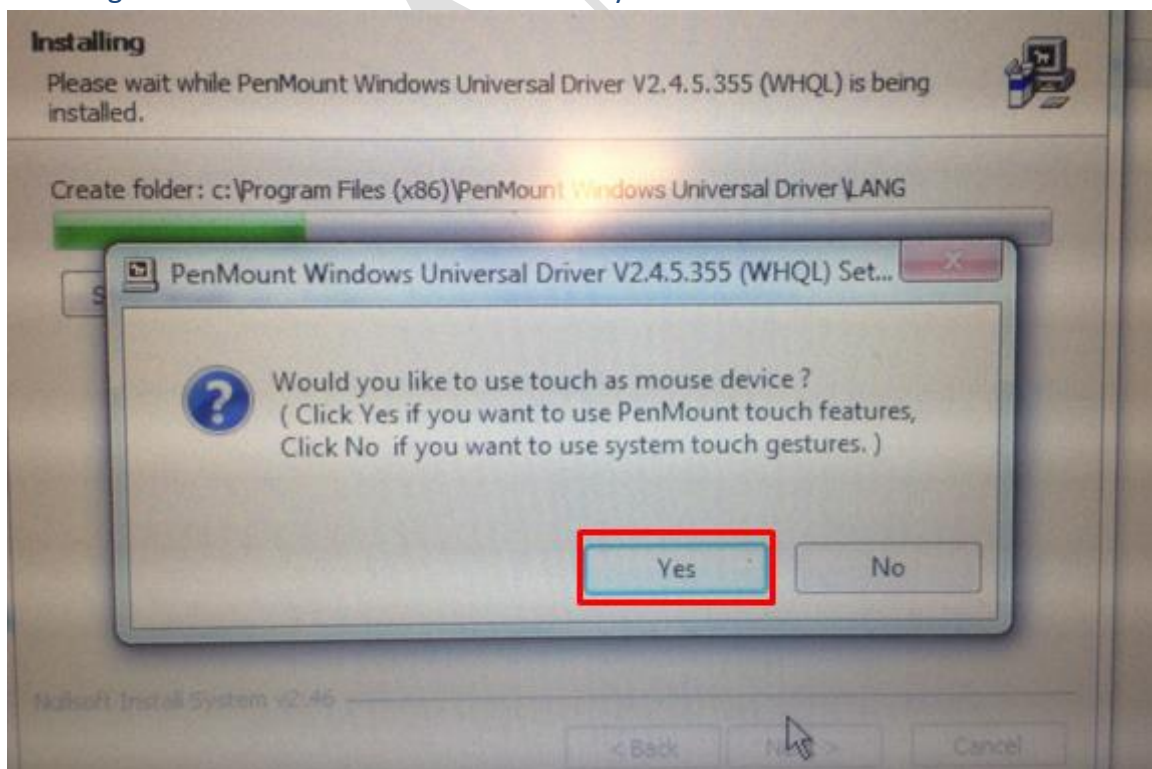
Date	2018 / 06 / 06	SR#	1-3470629776
Category	<input checked="" type="checkbox"/> FAQ <input type="checkbox"/> SOP	Related OS	Win7,Win8.1,Win10,WES7
Abstract	How to adjust the responding time of “press and hold” touch function?		
Keyword	Press and hold.		
Related Product	PPC-3060S/PPC-3100S/PPC-3120S		

■ **Problem Description:**

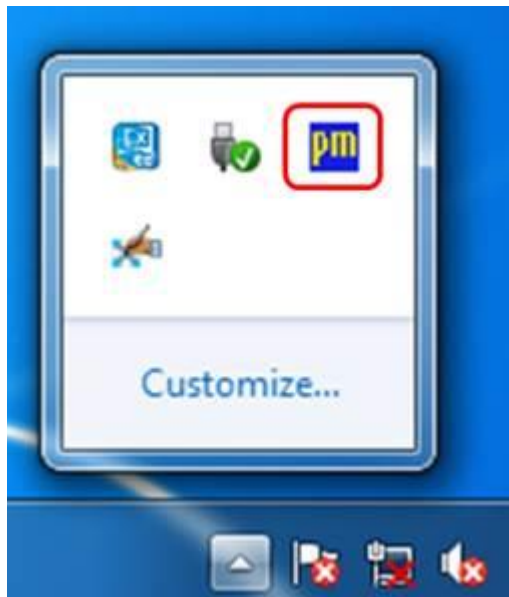
Panel touch function include a “press and hold” function that acts as “right-click” of mouse. If users want a longer or shorter responding time, it can be found in this document. (Users can adjust the responding time of press and hold touch function with this FAQ.)

■ **Brief Solution - Step by Step:**

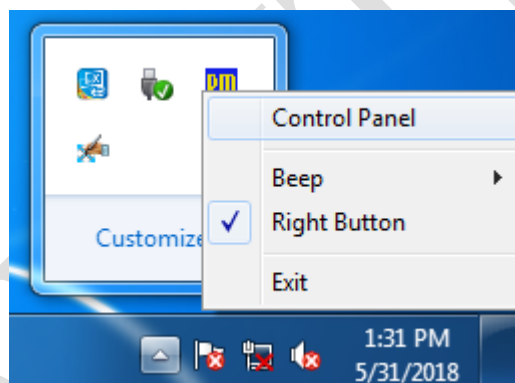
1. Download and install touch driver for your PPC product from support portal.
http://support.advantech.com/support/new_default.aspx
2. The dialog will show while installation. Choose “yes” for mouse simulation mode.



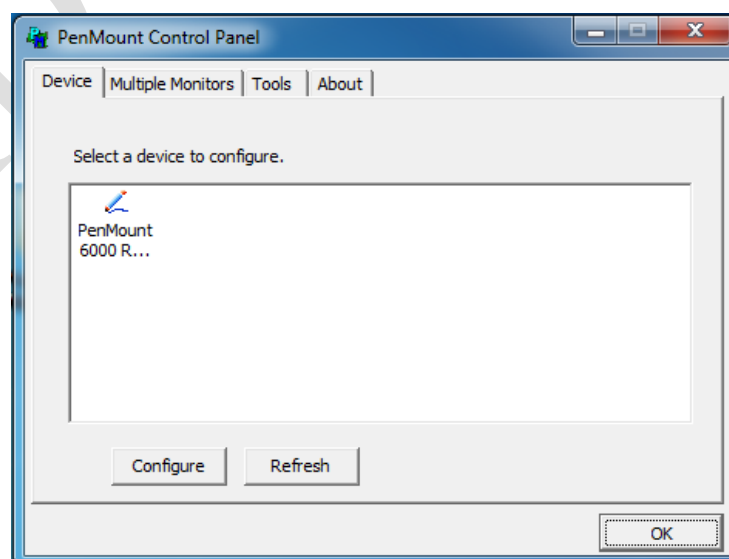
- After finishing installation, you may enter setting mode for calibration and more touch function.



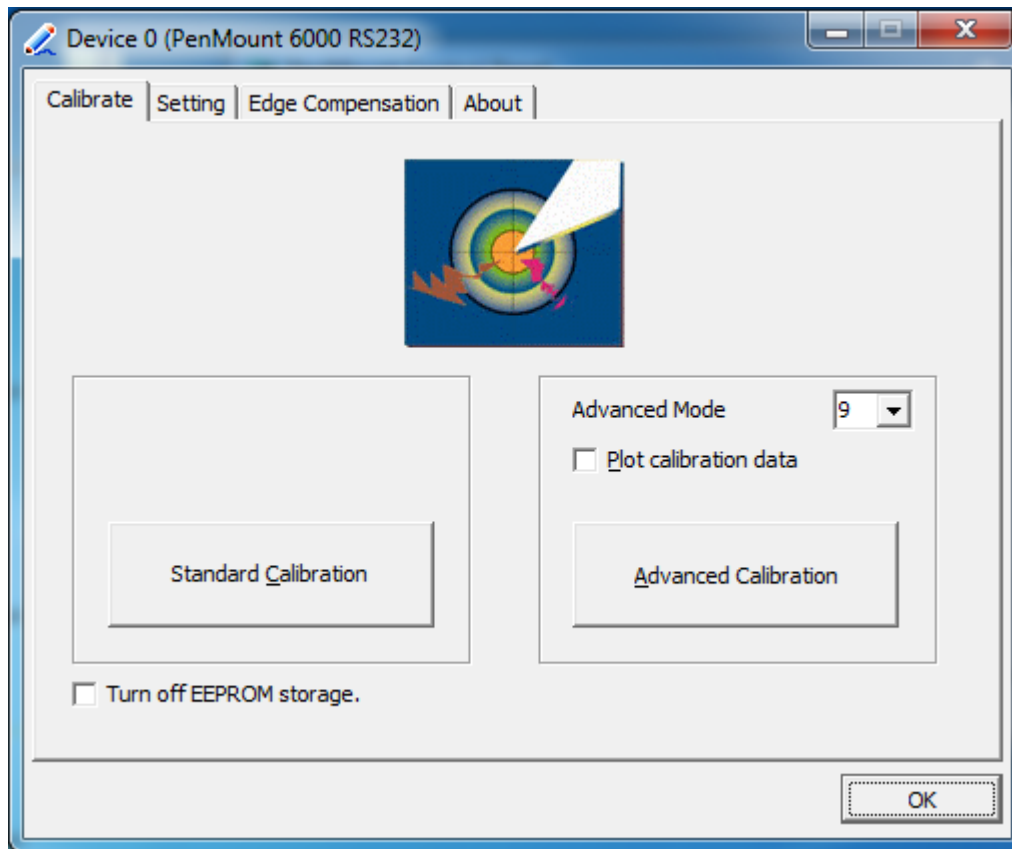
Enter "control panel" as shown below.



Choose the PenMount device then click "configure".



4. Both standard calibration and advanced calibration are workable. Choose the standard one in general.

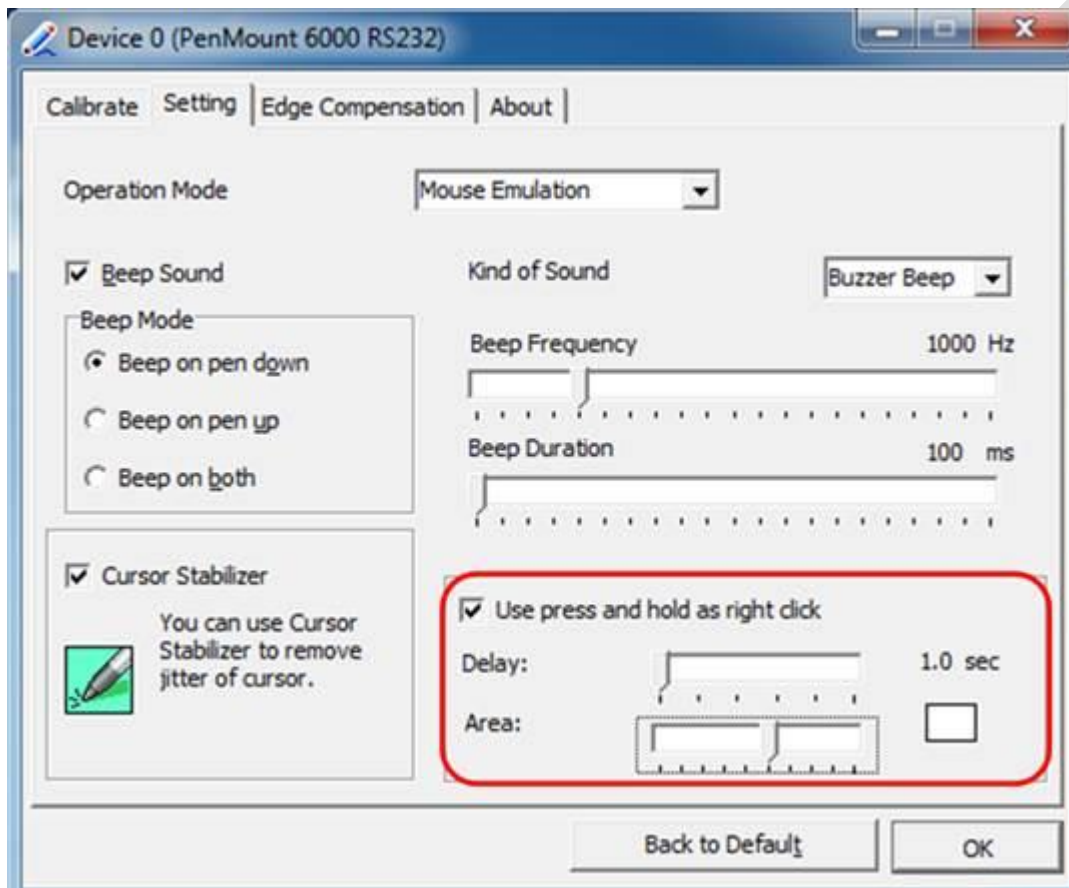


Touch for right click function(press and hold):**Method 1.**

Switch to “setting” screen, → check “Use Press and Hold as right click” to enable the function.

Delay: to adjust the responding time of press and hold function.

Area: adjust touch area. If touch area is been set too narrow, “press and hold” might been interrupted because of finger slight movement.

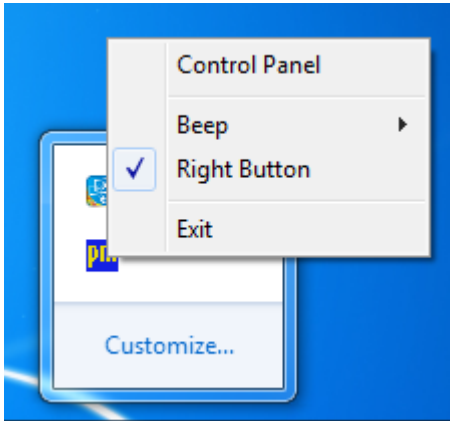


Method 2.

Click “right button” function.

Unclick: Keep pressing touch panel to enable right button.

Click: right button will immediately response by switching the mouse icon and then touch the panel.



When right button been checked, the icon will show for switching left or right button.

