

IMcV-DS3/E3/STS

LineTerm

USER MANUAL



B+B SMARTWORX

Powered by

ADVANTECH

Advantech B+B SmartWorx - Americas

707 Dayton Road

Ottawa, IL 61350 USA

Phone 1 (815) 433-5100

Fax 1 (815) 433-5105

Advantech B+B SmartWorx - Europe

Westlink Commercial Park

Oranmore, Co. Galway, Ireland

Phone +353 91-792444

Fax +353 91-792445

www.advantech-bb.com

support@advantech-bb.com

CONTENTS

About iMcV-10G Fiber Mode Converter XFP/XFP	4
Installation	4
Configuration	4
Requirements	5
Managed Modules	5
iView ² Management Software	5
Unmanaged Modules	6
DIP Switches	6
LED Operation	8
Features	9
Loopback (DIP Switch S1, Position 1)	9
Loopback Type (DIP Switch S1, Position 2)	9
Fault Loopback (DIP Switch S1, Position 4)	9
Transmit LIU Waveshape (Line Build-Out) (DIP Switch S1, Position 5)	10
Transmit Coax Data Source (DIP Switch S1, Positions 6 & 7)	10
DS3, E3/STS and STS Selection (DIP Switch S1, Position 8)	11
Remote Management (DIP Switch S1, Position 10)	11
Loopback Testing	11
Pseudorandom Bit Sequence (PRBS) Testing	13
Troubleshooting	14
Specifications	15
B+B SmartWorx Technical Support	16
Statements, Precautions, Guidelines, Regulatory	16
FCC Radio Frequency Interference Statement	16
Electrostatic Discharge (ESD) Precautions	17
Fiber Optic Cleaning Guidelines	17
Regulatory, Standards, Compliances	18

ABOUT IMCV-10G FIBER MODE CONVERTER XFP/XFP

iMcV-DS3/E3/STS-LineTerm is an SNMP manageable module that converts standard thin coax signals (DS3, E3/STS, STS) to a single-mode or multi-mode fiber signal. It performs the standard "LineTermination" (GR-820-CORE) function of these TDM- based line signals. This function transmits an Alarm Indication Signal (AIS) on the line whenever a received signal is lost. Line faults can easily be isolated to one line section and do not propagate over multiple-line sections as they do with normal line repeaters.

Each module includes one pair of BNC connectors and one pair of ST or SC fiber optic connectors. This module can be installed in any iMediaChassis or MediaChassis series, but can only be managed through an SNMP manageable iMediaChassis. DS3 Line Term modules must be configured as Host and Remote. To configure a module as a Remote, set DIP Switch #10 to ON.

In addition, it is available with single-strand fiber: iMcV-DS3/E3/STS-LineTerm BNC/SSFx modules allow two wavelengths (1310 nm and 1550 nm) to share one fiber strand, essentially doubling the capacity of installed fiber. The single-strand versions as HOST and REMOTE must have opposite transmit and receive wavelengths.

iMcV-DS3/E3/STS-LineTerm modules must be deployed in pairs (one at each end of a fiber line). The data transmitted on the fiber ports can only be received and interpreted by another iMcV-DS3/E3/STS-LineTerm unit.

NOTE: Some options require items that are sold separately, available from B+B SmartWorx.

INSTALLATION

iMcV-DS3/E3/STS-LineTerm modules can be installed in any iMediaChassis or MediaChassis series, but can be managed only through the iMediaChassis. Each module requires one slot in the chassis. To install a module, remove the blank brackets covering the slots where the module is to be installed by removing the screws on the outside edges of the bracket. Slide the module into the chassis card guides, until the module is securely seated in the connector. Secure the module to the chassis by tightening the captive screw. Save any blanks removed during installation for future use.

NOTE: It is not recommended that the iMcV-DS3/E3/STS-LineTerm module be installed in an IE-MediaChassis/1-DC chassis (850-33100). The power source in this chassis is not isolated and cannot support positive referenced ground systems typically used in Telco environments. The IE-MediaChassis/2-DC and the iMediaChassis/6-DC are suitable alternatives.

CONFIGURATION

Proper configuration of the iMcV-DS3/E3/STS-LineTerm is required for maximum performance and reliability. The following sections describe the prerequisites and the configurations available for both managed and unmanaged modules.

REQUIREMENTS

The iMcV-DS3/E3-STC-LineTerm conforms to many DS3/E3-STC-based environments. Ensure all of the relevant information about the expected installation environment is available before configuring the module. This includes:

- Distance of the coaxial run (137 meters/450 feet, maximum).
- Distance of the fiber run (must match fiber transceiver selected).
- Troubleshooting requirements.

MANAGED MODULES

iMcV-DS3/E3-STC-LineTerm modules can be managed remotely when installed in an iMediaChassis with an SNMP management module.

NOTE: Before installing modules, they must be configured for Host/Remote via the DIP Switches. The Master/Slave condition requires this configuration:

S1-10: ON, Remote Unit Enabled (only at the REMOTE end) (Remote)

S1-10: OFF, Remote Unit Disabled (only at the LOCAL end) (Host)

After the module is installed, modify the SNMP enabled features by using the iView² SNMP management software. In a managed chassis, the software settings take priority over DIP Switch settings. Ensure the software settings match the desired configuration requirements for the installation.

IVIEW² MANAGEMENT SOFTWARE

iView² is the B+B SmartWorx management software designed specifically for the B+B SmartWorx “iMcV” family of modules. It features a GUI and gives network managers the ability to monitor and control the manageable B+B SmartWorx products.

iView² is available in several versions: WebServer version 3.0, and can also function as a snap-in module for HP OpenView Network Node Manager and other third party SNMP Management software.

iView² supports these O/S platforms: Windows 2000, XP, Vista, 7.

In addition, there are Java versions of iView² for Java-capable operating systems such as Linux.

See the *SNMP Management Module* installation guide for software configuration options (B+B SmartWorx website).

UNMANAGED MODULES

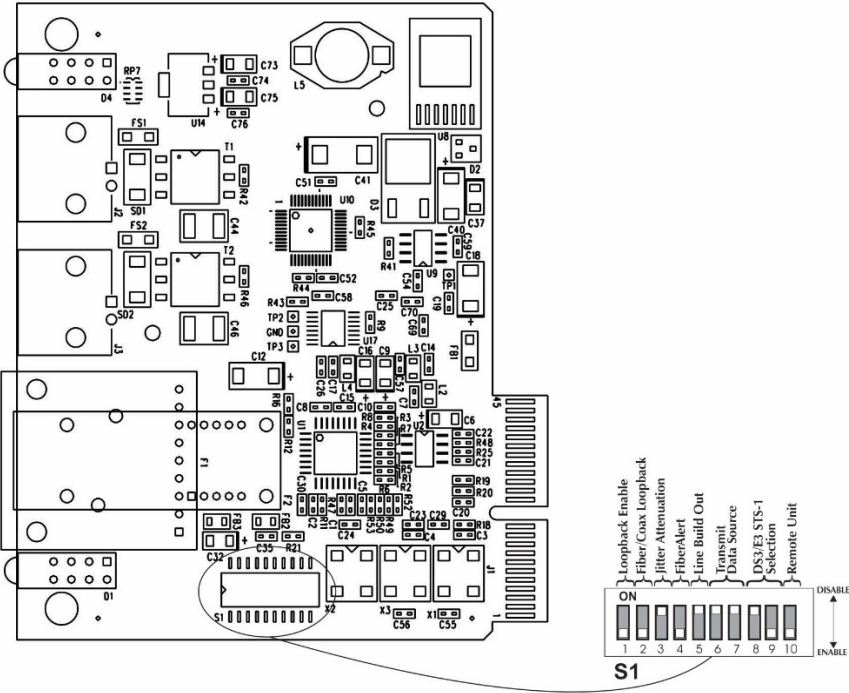
Before installing the module in an unmanaged chassis, manually configure all of the desired DIP Switch selectable features.

DIP SWITCHES

The iMcV-DS3/E3/STs-LineTerm DIP Switches are located at S1 and S2 on the PCB. The S2 DIP Switches are factory configured and must not be changed. The S1 DIP Switches provide control over the available iMcV-DS3/E3/STs-LineTerm features.

DIP Switch Locations

The locations of the S1 DIP Switches are shown in the following diagram:



DIP Switch Settings

FUNCTION	SWITCH SETTINGS	RESULT [(D) = Default]
Loopback (iView² Configurable)	S1-1: OFF	Loopback Disabled (D)
	S1-1: ON	Loopback Enabled
Loopback Type (iView² Configurable)	S1-2: OFF	Coax (D)
	S1-2: ON	Fiber
Jitter Attenuation (iView² Configurable)	S1-3: OFF	Jitter Attenuator on Receive Side
	S1-3: ON	Jitter Attenuator on Transmit Side (D)
FiberAlert (iView² Configurable)	S1-4: OFF	FiberAlert Disabled (D)
	S1-4: ON	FiberAlert Enabled
Line Build-Out (iView² Configurable)	S1-5: OFF	0 to 255 ft. (0 to 77 m)
	S1-5: ON	> 255 ft. (D) (> 77m [D])
Transmit Data Source (iView² Configurable)	S1-6: ON 7: ON	Standard Data (D)
	S1-6: OFF 7: ON	Unframed All Ones
	S1-6: ON 7: OFF	Alternating Ones & Zeros
	S1-6: OFF 7: OFF	Pseudorandom Bit Sequence
DS3/E3/STs Selection	S1-8: ON 9: OFF	45 Mbps (DS3)
	S1-8: OFF 9: ON	34 Mbps (E3)
	S1-8: ON 9: ON	52 Mbps (STs)
Remote Unit	S1-10: OFF	Remote Unit Disabled (D)
	S1-10: ON	Remote Unit Enabled

LED OPERATION

The iMcV-DS3/E3-STs-LineTerm module features several diagnostic LEDs per port. The LED functions are:

ER	<p><u>LEDs Next to Coax (BNC) Port</u></p> <p>Flashes yellow whenever a line code violation is received.</p>	
LOS	<p>Glows red when the BNC is receiving no signal and is in an LOS ALARM state, resulting in sending an RAI signal to the fiber port. If Fault Loopback is set to ON, then AIS will also be sent to the Coax line as well.</p>	
PRBS	<p>Glows green when the BNC port receives a valid Pseudorandom Bit Sequence. Off when the port is not receiving a Pseudorandom Bit Sequence.</p>	
LPBK	<p>Glows yellow when the module is in either coax or fiber loopback mode.</p>	
	<p><u>LEDs Next to Fiber Optic Port</u></p>	
ER	<p>Glows yellow when a fiber symbol error has been received.</p>	
LOS	<p>Glows red when a link is not established and is in a LOS ALARM state and will send an AIS signal to the BNC Line. If Fault Loopback is enabled, then an RAI Signal is also sent to the fiber line.</p>	
RM	<p>Glows green on the Remote Unit when set to DSW S1-10. Glows green on the Local unit when it has discovered a Remote management with Remote Unit enabled.</p>	
RAI	<p>Glows yellow when a Remote Alarm Indication is received on the fiber port. When the fiber port receives an RAI signal, this will force AIS to transmit on the COAX Line.</p>	

FEATURES

The iMcV-DS3/E3/STS-LineTerm module includes several features that allow configuration for DS3, E3/STS, or STS-based environments.

LOOPBACK (DIP SWITCH S1, POSITION 1)

This switch enables or disables the loopback feature. When enabled, the data line (Coax or Fiber) set by the "Loopback Type" DIP Switch is looped back.

By default this feature is **DISABLED**.

This feature can be controlled by SNMP management software (iView²) when the iMcV-DS3/E3/STS-LineTerm module, configured as a HOST, is installed in a managed chassis.

LOOPBACK TYPE (DIP SWITCH S1, POSITION 2)

This switch identifies which data line is looped back when the Loopback DIP Switch is enabled. The data line loopback selection can specify either a Fiber Loopback or a Coax Loopback.

By default this feature is **COAX**.

This feature can be controlled by SNMP management software (iView²) when the HOST iMcV-DS3/E3/STS-LineTerm module is installed in a managed chassis.

FAULT LOOPBACK (DIP SWITCH S1, POSITION 4)

This switch enables or disables the Fault Loopback feature. A normal fault Loss Of Signal (LOS) will cause an Alarm Indication Signal (AIS) to be sent on to the next line segment. This feature provides for a fault condition to be sent back towards the direction of the detected fault. In this way, both upstream and downstream craft personnel are alerted to a single fault.

The Fault Loopback feature uses the iMcV-DS3/E3/STS-LineTerm module LEDs to indicate that a loss of one strand of fiber has occurred. When a strand becomes unavailable, the module at the receiver-end detects the LOS of the fiber link and lights the LOS LED. The module then responds by sending a Remote Alarm Indication (RAI) signal back to the Fiber line turning ON the RAI LED at the far end of the line and sending AIS to the COAX Port. The RAI LED is now ON at the source of the Fiber fault. By using the Fault Loopback Function, a local site administrator can quickly determine where a fiber fault is located from either end of the fiber line.

The AIS is transmitted as an M13 framed all-ones signal for DS3. For E3/STS and STS, the AIS signal is an unframed all-ones pattern.

By default this feature is **ENABLED**.

This feature can be controlled by SNMP management software (iView²) when the HOST iMcV-DS3/E3/STS-LineTerm module is installed in a managed chassis.

TRANSMIT LIU WAVESHAPE (LINE BUILD-OUT) (DIP SWITCH S1, POSITION 5)

This switch selects the optimal transmit waveshape for the line build-out distance on the coax line. The transmit waveshape can be set for a distance of either 0 to 255 feet or over 255 feet (77.7 meters). This feature corrects problems related to cabling (cross-talk, electromagnetic interference, etc.). Improperly setting this switch will cause signal degradation.

By default this feature is set to **0 to 255 feet** (450 ft maximum). (77.7 meters)

TRANSMIT COAX DATA SOURCE (DIP SWITCH S1, POSITIONS 6 & 7)

These switches select the transmit mode used by the iMcV-DS3/E3/STS-LineTerm module. Transmit modes that can be selected include the following:

- Standard Data
- Unframed All Ones (diagnostic)
- Alternating Ones and Zeros (diagnostic)
- Pseudorandom Bit Sequence (diagnostic 2¹⁵-1 PRBS Pattern)

These standard Telco transmission pattern modes are provided to help diagnose transmission errors in the line.

By default this feature is set to **STANDARD DATA**.

This feature can be controlled by SNMP-management software (iView²) when the HOST iMcV-DS3/E3/STS-LineTerm module is installed in a managed chassis.

DS3, E3/STS AND STS SELECTION (DIP SWITCH S1, POSITION 8)

This switch selects the data rate to use on the coax line. Data rate selections include the following:

- **DS3** (44.736 Mbps +/- 20 ppm)
- **E3/STS** (34.368 Mbps +/- 20 ppm)
- **STS** (51.840 Mbps +/- 20 ppm)

By default this feature is set to **DS3**. This feature can be selected only by setting manually DIP Switches.

REMOTE MANAGEMENT (DIP SWITCH S1, POSITION 10)

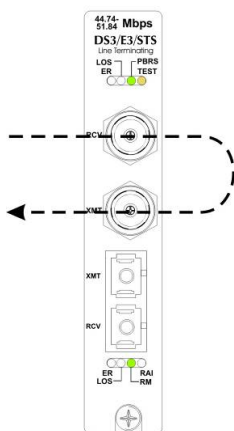
This switch enables or disables the Remote Management mode. Enabling Remote Management on the Remote module allows all SNMP configurable features for the Remote modules to be configured from the Host module. By default, this feature is **Disabled**, and the module acts as a HOST device in the default setting. This feature can be selected only by manually setting DIP Switches.

LOOPBACK TESTING

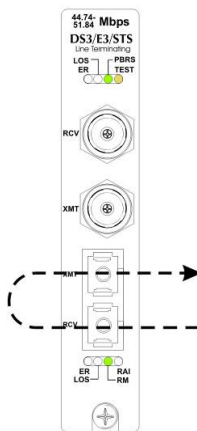
The iMcV-DS3/E3/STS-LineTerm includes two loopback test modes: Coax Loopback and Fiber Loopback.

The following illustrations shows the path that a signal takes in each of the loopback test modes.

Coax Loopback



Fiber Loopback

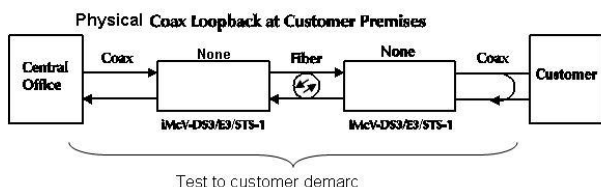
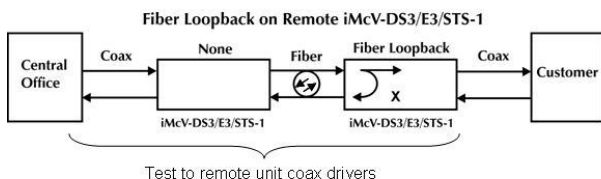
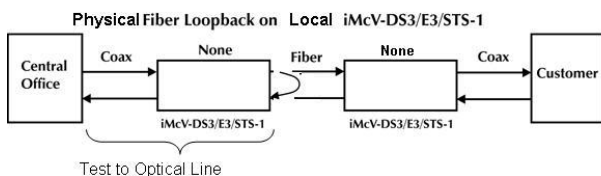
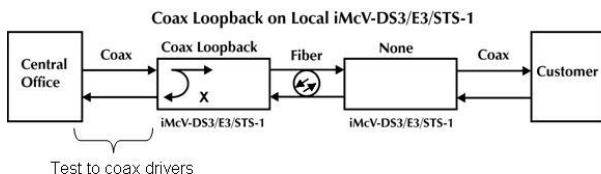


Each loopback performs the following:

- Copies the incoming signal back out to the origin while continuing to transmit this signal downstream.
- Blocks downstream data from arriving on the looped data line.

Loopback testing is useful for troubleshooting network connections. Looping received data back onto the transmit path helps determine if a connection is still valid. Remote loopback tests isolate problems on the coax run between an iMcV-DS3/E3/STS-LineTerm module and the connected device; while local loopback tests can isolate problems on the fiber connected to the module.

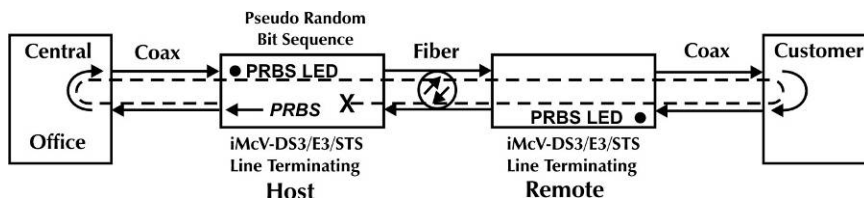
The below diagrams show typical progression of loopback tests - start by checking the coax segment at local side, then fiber segment at remote side, etc.



NOTE: Physical fiber loopback capability is only available when performing the loopback at the Host. Remote unit will not loop customer data back unless Remote management DIP Switch #10 is set to OFF.

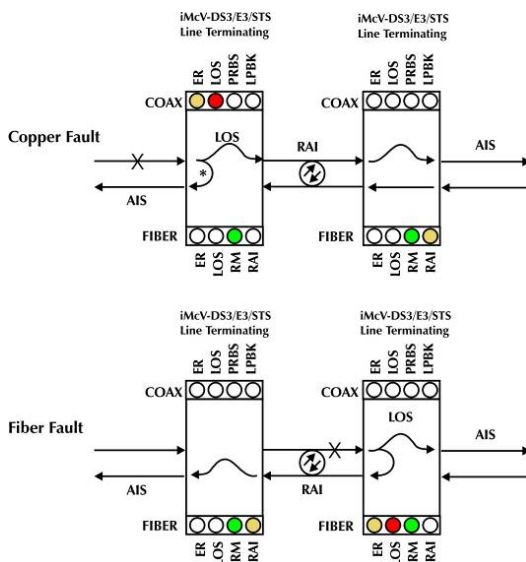
PSEUDORANDOM BIT SEQUENCE (PRBS) TESTING

- To test using the internal Pseudorandom Bit Sequence source, ensure that Central Office and Customer Premises equipment are configured for loopback.
- iMcV-DS3/E3-STs-LineTerm modules should be set to normal default mode.
- On the HOST iMcV-DS3/E3-STs-LineTerm module, set the Transmit Coax Data Source to "Transmit Pseudorandom Sequence" (S1-6, S1-7=OFF).
- Verify the PRBS LED comes ON at the HOST iMcV-DS3/E3-STs-LineTerm module to validate the coax wire connections to the Central Office.
- Verify the PRBS LED comes ON at the REMOTE iMcV-DS3 module to validate the coax wire connections at Customer Premises equipment and the fiber line going to the REMOTE iMcV-DS3/E3-STs-LineTerm module.
- The fiber line returning from the remote iMcV-DS3/E3-STs-LineTerm module is validated by verifying the RM LED is ON at the HOST iMcV-DS3/E3-STs-LineTerm module.
- At this point all connections for the channel have been verified.



TROUBLESHOOTING

- The Coax Port can easily be tested using the internal PRBS signal generator and detector and a physical wire loop on the coax interface.
- The Fiber Port is internally tested at all times by a working pair of units. With one unit configured for Local Management (Switch 10 set OFF) and the other for Remote Management (Switch 10 set ON), the fiber line is verified if the "RM" LED is ON at both ends of the fiber line. Under normal operation, only the "RM" LED is ON at both HOST and REMOTE.
- To test a media converter by itself, first ensure you have an appropriate fiber patch cable, then follow these steps:
 1. Connect the media converter to the BNC device with a coax cable.
 2. Loop a single strand of fiber from the Transmit port to the Receive port of your media converter.
 3. Verify that you have a valid connection for both the BNC and fiber ports on your media converter. (No "ER" or "LOS" LED ON)
- If there is trouble with link connectivity, verify your cable connection and DIP Switch setting are correct.
- Use the following LED indications to identify the fault location:



NOTE: DIP Switch 4 must be set to ON for Fault Loopback to operate as illustrated above.

SPECIFICATIONS**DS3, E3/STX, STX Interface:**

BNC coax 75 +/- 5% Ohms

DS3 (44.736 Mbps +/- 20 ppm)

E3/STX (34.368 Mbps +/- 20 ppm)

STX (51.840 Mbps +/- 20 ppm)

Power Consumption (Typical):

0.550 Amps @ 5 V

Operating Temperature:

0 to +50 °C (+32 to +122 °F)

Storage Temperature:

-20 to +70 °C (-4 to +158 °F)

Humidity:

5 to 95% (non-condensing); 0 to 10000 ft. altitude

Dimensions:

106.4 x 19.81 x 69.85 mm (4.19 x 0.78 x 2.75 in)

B+B SMARTWORX TECHNICAL SUPPORT

USA/Canada: 1 (800) 346-3119 (Ottawa IL USA)

Europe: +353 91 792444 (Ireland / Europe)

Email: support@advantech-bb.com

Web: www.advantech-bb.com

STATEMENTS, PRECAUTIONS, GUIDELINES, REGULATORY**FCC RADIO FREQUENCY INTERFERENCE STATEMENT**

This equipment has been tested and found to comply with the limits for a Class A computing device, pursuant to Part 15 of the FCC Rules. These limits are designed to provide reasonable protection against harmful interference when the equipment is operated in a commercial environment. This equipment generates, uses and can radiate radio frequency energy and, if not installed and used in accordance with the instruction manual, may cause harmful interference to radio communications. Operation of this equipment in a residential area is likely to cause harmful interference in which the user will be required to correct the interference at his own expense.

Any changes or modifications not expressly approved by the manufacturer could void the user's authority to operate the equipment.

The use of non-shielded I/O cables may not guarantee compliance with FCC RFI limits. This digital apparatus does not exceed the Class A limits for radio noise emission from digital apparatus set out in the Radio Interference Regulation of the Canadian Department of Communications.

Le présent appareil numérique n'émet pas de bruits radioélectriques dépassant les limites applicables aux appareils numériques de classe A prescrites dans le Règlement sur le brouillage radioélectrique publié par le ministère des Communications du Canada.

ELECTROSTATIC DISCHARGE (ESD) PRECAUTIONS

Electrostatic discharge (ESD) can cause damage to any product, add-in modules or stand alone units, containing electronic components. Always observe the following precautions when installing or handling these kinds of products

1. Do not remove unit from its protective packaging until ready to install.
2. Wear an ESD wrist grounding strap before handling any module or component. If the wrist strap is not available, maintain grounded contact with the system unit throughout any procedure requiring ESD protection.
3. Hold units by the edges; do not touch the electronic components or gold connectors.
4. After removal, always place boards on a grounded, static-free surface, ESD pad or in a proper ESD bag. Do not slide the modules or stand alone units over any surface.



WARNING! Integrated circuits and fiber optic components are extremely susceptible to electrostatic discharge damage. Do not handle these components directly unless you are a qualified service technician and use tools and techniques that conform to accepted industry practices.

FIBER OPTIC CLEANING GUIDELINES

Fiber Optic transmitters and receivers are extremely susceptible to contamination by particles of dirt or dust, which can obstruct the optic path and cause performance degradation. Good system performance requires clean optics and connector ferrules.

1. Use fiber patch cords (or connectors, if you terminate your own fiber) only from a reputable supplier; low-quality components can cause many hard-to-diagnose problems in an installation.
2. Dust caps are installed at the factory to ensure factory-clean optical devices. These protective caps should not be removed until the moment of connecting the fiber cable to the device. Should it be necessary to disconnect the fiber device, reinstall the protective dust caps.
3. Store spare caps in a dust-free environment such as a sealed plastic bag or box so that, when reinstalled, they do not introduce any contamination to the optics.
4. If you suspect that the optics have been contaminated, alternate between blasting with clean, dry, compressed air and flushing with methanol to remove particles of dirt.

REGULATORY, STANDARDS, COMPLIANCES**Standards Compliance (DS3, E3/STS, STS):**

ANSI T1.102-1993

ANSI T1.107.1995

GR-820-CORE

Safety Certifications

UL/cUL Listed to Safety of Information Technology Equipment, including Electrical Business Equipment.

CE The products described herein comply with the Council Directive on Electromagnetic Compatibility (2004/108/EC) For more information, contact B+B SmartWorx.

**Class 1 Laser product, Luokan 1 Laserlaitte,
Laser Klasse 1, Appareil A' Laser de Classe 1**

European Directive 2002/96/EC (WEEE) requires that any equipment that bears this symbol on product or packaging must not be disposed of with unsorted municipal waste. This symbol indicates that the equipment should be disposed of separately from regular household waste. It is the consumer's responsibility to dispose of this and all equipment so marked through designated collection facilities appointed by government or local authorities. Following these steps through proper disposal and recycling will help prevent potential negative consequences to the environment and human health. For more detailed information about proper disposal, please contact local authorities, waste disposal services, or the point of purchase for this equipment.



© 2018 B+B SmartWorx – powered by Advantech. All rights reserved. The information in this document is subject to change without notice. B+B SmartWorx assumes no responsibility for any errors that may appear in this document. iMcV-DS3-E3-STs LineTerm is a trademark of B+B SmartWorx. Other brands or product names may be trademarks and are the property of their respective companies.

Documentation Number: iMcV-DS3-E3-STs LineTerm_4618m