

<b>Data Create</b>	2015/03/26	<b>Release Note</b>	<input type="checkbox"/> Internal <input checked="" type="checkbox"/> External
<b>Category</b>	FAQ	<b>Product Group</b>	IAG
<b>Function</b>	Communication	<b>Related OS</b>	Ubuntu
<b>Related Product</b>	UNO-2184G		

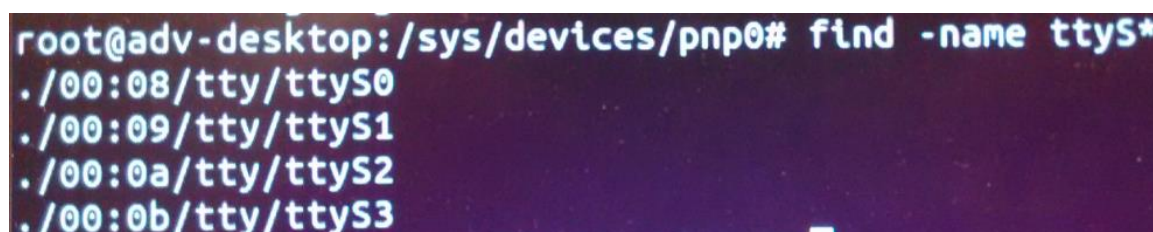
## [Abstract]

Many com port device names will show. User is hard to know the relationship between real com port number and device name.

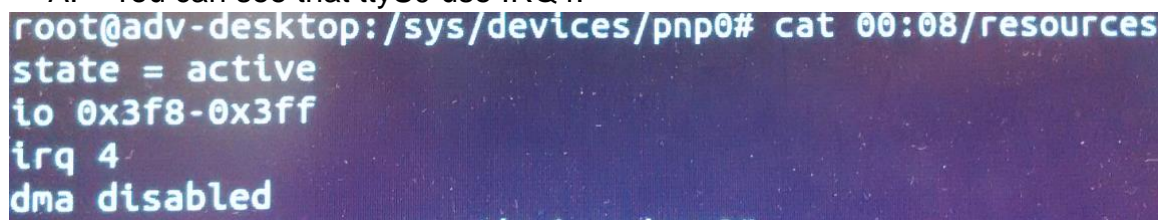


## [Solution]

1. Type "Cd /sys/devices/pnp0"
2. Type "find -name ttyS\*"
  - A. You will see there are four com port devices in this UNO.



3. Type "Cat 00:08/resources"
  - A. You can see that ttyS0 use IRQ4.



4. Go to BIOS, Advanced>NCT6776F Super IO configuration>Serial Port 1
  - A. You can see COM1 use the exact resource as ttyS0. So ttyS0 represent COM1.

## Serial Port 1 Configuration

Serial Port	[Enabled]
Device Settings	IO=3F8h; IRQ=4;
Change Settings	[IO=3F8h; IRQ=4;]
Serial Port 1 Mode	
RS232	