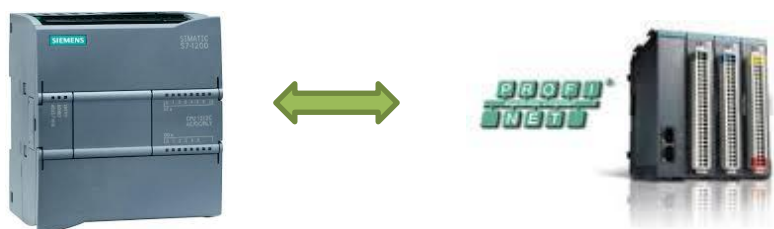


## Advantech AE Technical Share Document

<b>Date</b>	2015 / 07 / 17	<b>SR#</b>	1-2120491592
<b>Category</b>	■ FAQ □ SOP	<b>Related OS</b>	Win X86
<b>Abstract</b>	How to use Simens S7-1200 to control APAX-5071		
<b>Keyword</b>	APAX-5071, PROFINET		
<b>Related Product</b>	APAX-5071		

### [Problem]

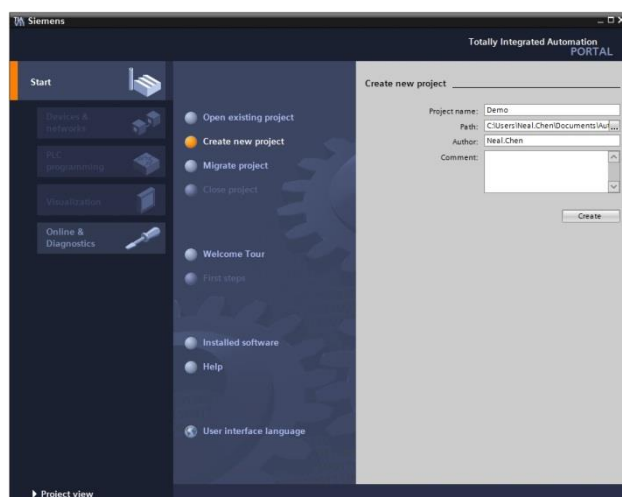
How to use Simens S7-1200 to control APAX-5071?



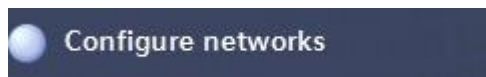
### [Solution]

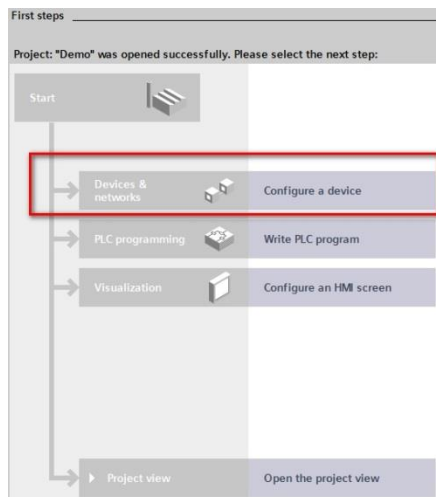
Please follow the steps below to know how to use Simens S7-1200 to control APAX-5071 Ethernet/IP coupler

1. Open TIA Portal V11 to create a new project

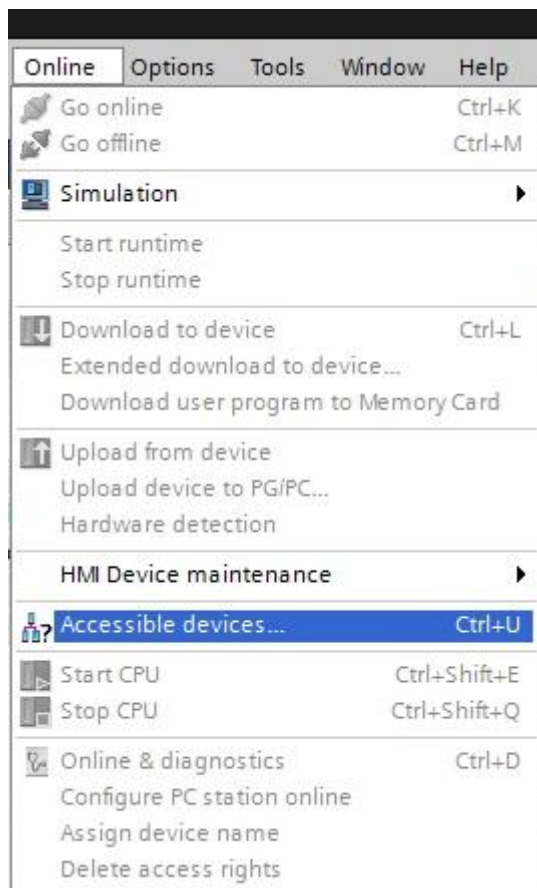


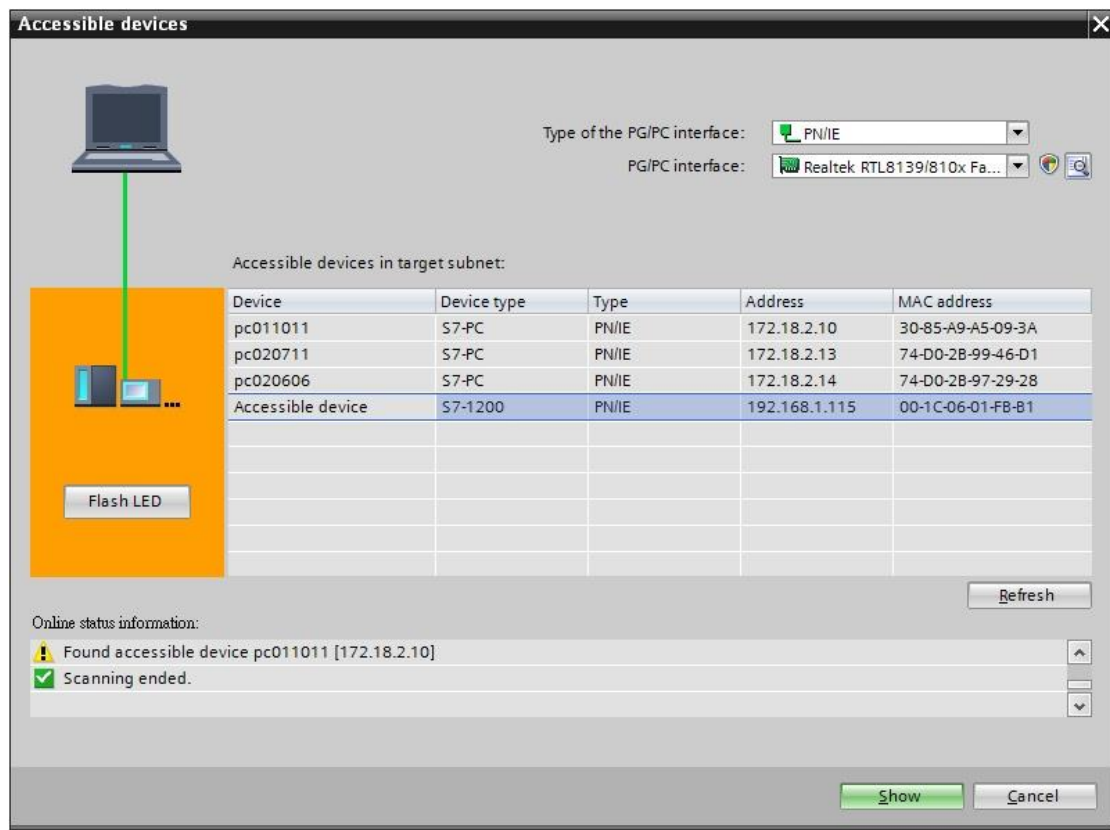
2. Configure a device and then Configure networks



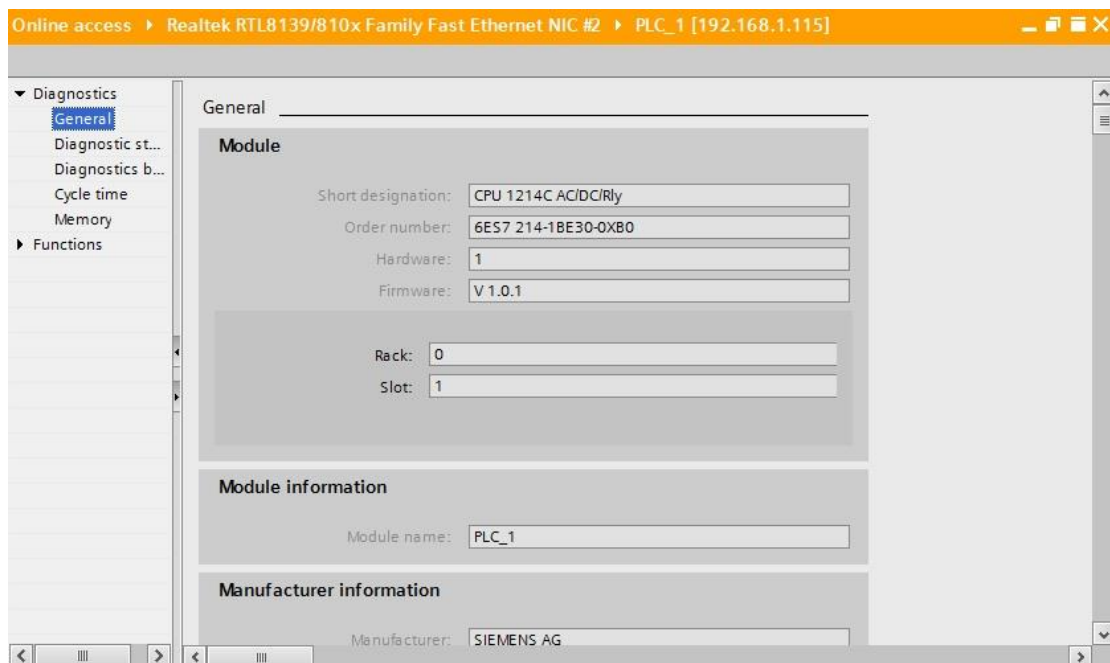


### 3. Accessible devices

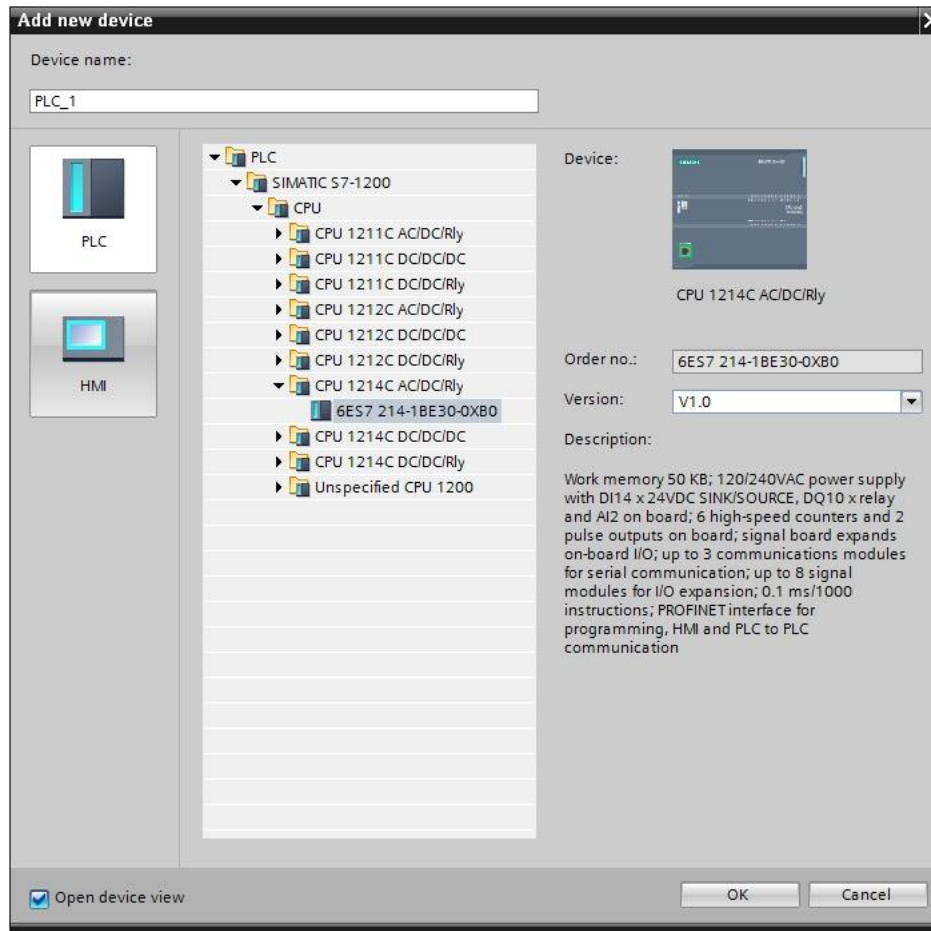




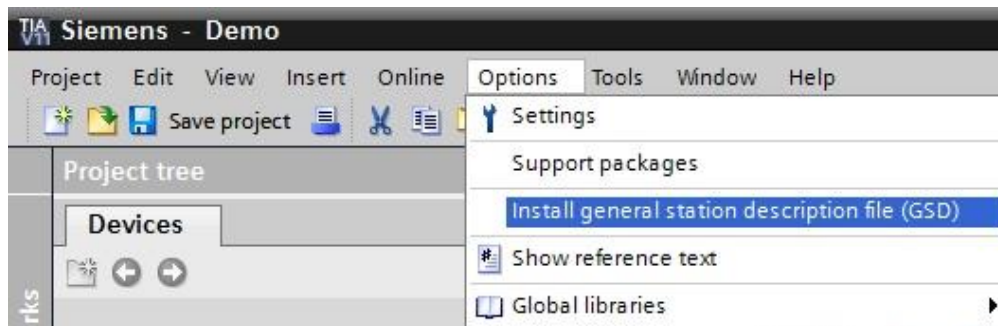
## 4. Module information

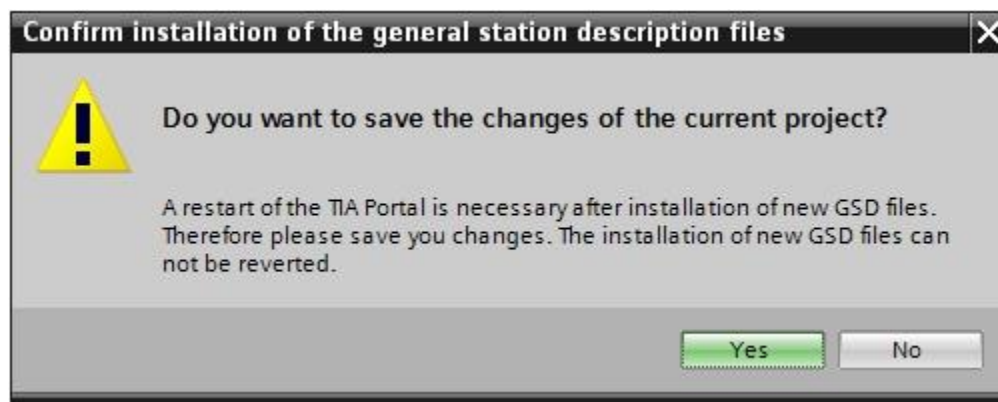
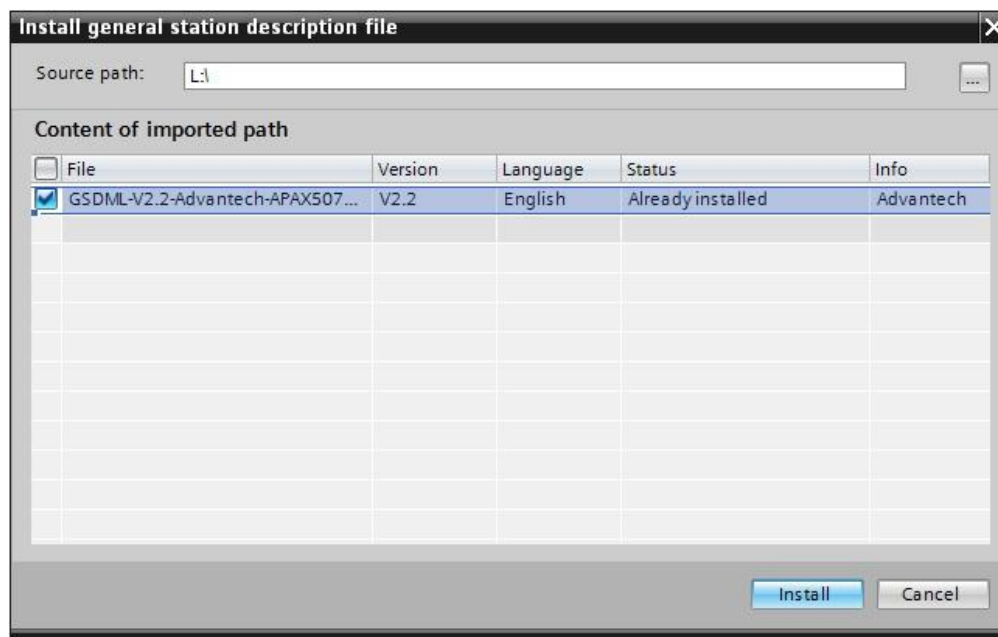


## 5. Add new device

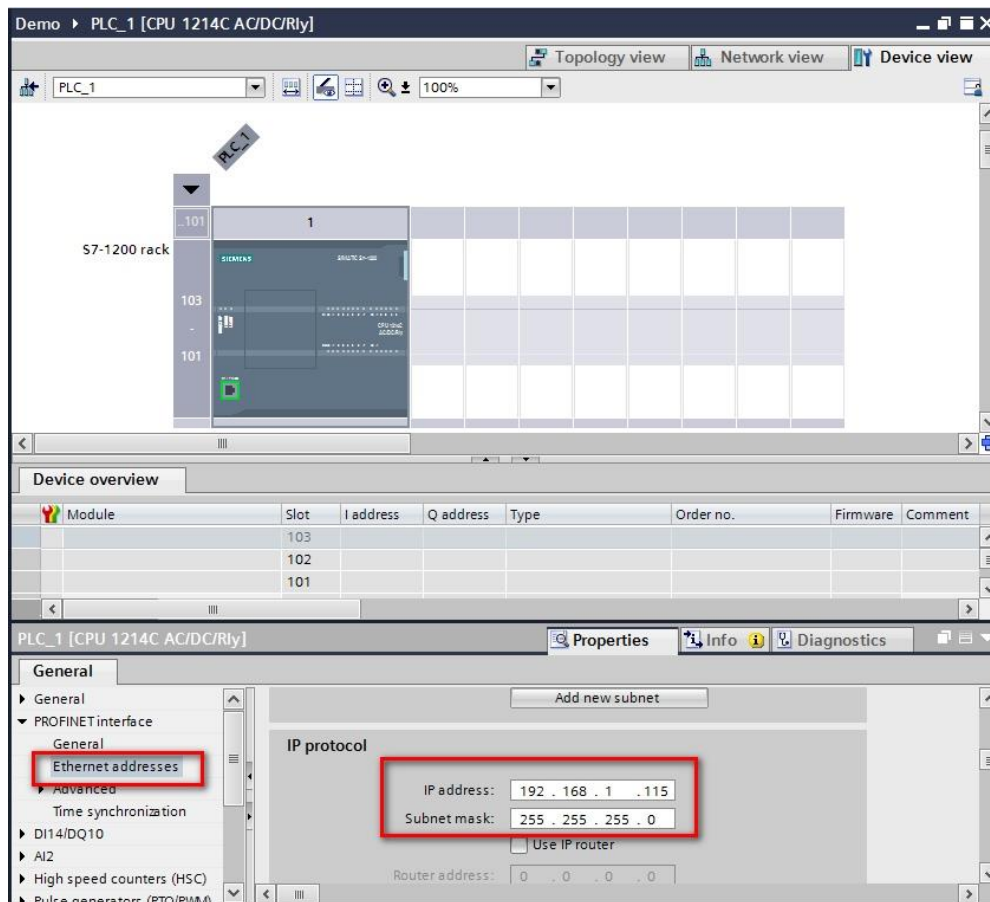


## 6. Install GSD file

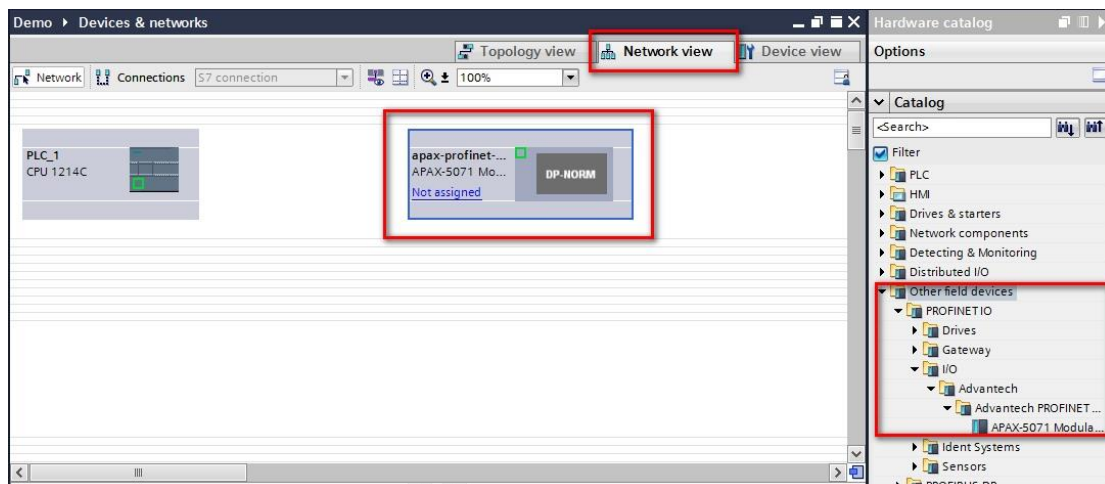




## 7. Set the PLC Interface IP



## 8. Add APAX-5071 module



## 9. Assign to new IO controller

